



# European Angus Forum Germany

2024, July 10th to 17th

Hosted by the Federal Association of German Angus Breeders (BDAH)

[www.angus-bundesverband.de](http://www.angus-bundesverband.de)



## Sponsors:



ABO Wind AG, Wiesbaden  
Agrarproduktion Babe GmbH, Neustadt (Dosse)  
Agrom, Herbertingen  
Altenmarkter Angus, Berg im Drautal  
Angushof Emde, Korbach  
Angushof Freerksen, Emden-Petkum  
Anguszucht Hengst, Borgenteich  
Anguszucht Reichert, Dessau-Roßlau  
Anguszucht Rohleder, Haina-Löhlbach  
Anguszucht Ruppel-Rücklinger, Schotten-Eschenrod  
Angus-Hof Sippel, Korbach  
Anguszucht Vier Linden, Bad Wünnenberg  
BAOS Anhängerbau GmbH, Großenkneten  
Bauernverband Mecklenburg-Vorpommern, Neubrandenburg  
Besamungsverein Neustadt/Aisch e.V., Neustadt/Aisch  
Betriebsgemeinschaft Dröse Hänigsen, Hänigsen  
Block Foods AG, Hamburg  
Bornwiesenhof, Haunetal Odensachsen  
Bundesverband Rind und Schwein e.V., Bonn  
Christelhei Angus, Satrup  
CRYSTALYX Products GmbH, Münster  
EuroArGen  
FleischrinderVerband Bayern e.V., Ansbach  
Thomas Grothe  
HBV Beteiligungsgesellschaft mbH, Friedrichsdorf  
Hof Eselsmühle, Lohra  
Hof Herresthal, Olk bei Trier  
Hof Trumann, Hohne  
horizont group gmbh Animal care, Korbach  
IG Angus Hessen, Ottrau  
IG Angus West  
John Deere Walldorf International GmbH, Walldorf  
Ludwigsluster Fleisch- und Wurstspezialitäten GmbH & Co. KG, Ludwigslust  
NeoGen  
Patura, Laudenbach  
Qnetics GmbH, Alsfeld  
Raiffeisen Waldeck-Marsberg GmbH, Korbach  
RBB Rinderproduktion Berlin-Brandenburg GmbH, Groß Kreutz  
Richard Brinette  
RinderAllianz GmbH Zuchtzentrum Bismark, Bismark  
Rinderzucht Schleswig-Holstein e.G., Neumünster  
Stephan Nagel, Steesow  
Stiens Beef, Kaufungen  
Thomas Hilgert, Großderschau  
Vit w.V., Verden  
Vuxx, Papenburg  
Vytelle GmbH

## Dear guests of the European Angus Forum,



It is an honour to welcome our Angus friends from all over Europe and in some cases from all over the world here in Germany. The first Angus came to Germany in 1920. These animals were the beginning of a success story. For some years now, we have a pedigree population of almost 11,000 animals in Germany - but this is no reason to rest on our laurels.

More and more farmers are discovering the advantages of our breed. To maintain this success, which is also continuing in our neighbouring countries, it is important to come together, exchange ideas and take action at European level. Our forums are the best way to meet, get to know other countries and make friends.

Many guests have already travelled the world together and some have been friends for decades. Everyone benefits from this bond and it is important to maintain these friendships.

In order to offer you a wonderful week with lots of impressions, we have planned a tour through the most diverse regions of Germany, from rather smaller structured companies in Hesse and Lower Saxony to the large companies farms in the east, but they all have one thing in common: breeding angus animals of the highest quality. Another highlight will be the largest agricultural show in the north of Germany, with over 60 Angus animals entered. One of the most beautiful German cities - Hamburg - is also on the programme, before travelling to our capital Berlin for the forum. Of course, such a complex journey cannot be planned alone, not without energetic helpers

helpers and certainly not without sponsors who have generously supported us. I would therefore like to thank all the breeders who have agreed to present their breeding, our travel agency Vogt for their professional support and the numerous companies and private individuals who supported us with adverts and donations, my colleagues on the board and our CEO, who have all worked hard to ensure that you have an unforgettable time with us.

I wish you all an interesting and sociable journey through our country and hope that you take home many positive impressions.

Herzlichst,

A handwritten signature in blue ink, appearing to read "R. Brinette".

Ihr Richard Brinette

## Dear Angus breeders,

this year, our agricultural sector in Hesse and across Germany has garnered significant attention – not only through our peaceful and democratic protests, but also through our successful political association work. Securing the green license plate is a major achievement that demonstrates our ability to effectively represent our interests. This accomplishment has opened the doors for negotiations on further significant relief measures for agriculture. It is now up to the politicians to implement them.



In particular, we are facing substantial challenges in animal husbandry. However, even though much is demanded of our agriculture, we are working hard to meet the demands of society and are prepared to make changes. In addition to appropriate political frameworks, we need well-educated and highly motivated young professionals to tackle the challenges of our time and to ensure the future viability of our agriculture.

It is worthwhile, because agricultural and green professions in general are characterised by great diversity. Agriculture is closely connected to nature through the handling of plants and animals, but it is also a high-tech profession. This duality has made agriculture more precise, environmentally friendly, and resource-efficient.

The European Angus-Forum offers the ideal opportunity to exchange knowledge, experience and to further advance the breeding of Angus cattle in Europe. I wish you exciting days, inspiring tours, and enriching conversations.

Yours,

A handwritten signature in blue ink, appearing to read 'K. Schmal'.

Karsten Schmal

Hessens Bauern ist eine Marke des Hessischen Bauernverbandes



# ERLEBE HESSENS LANDWIRTSCHAFT

- ❧ Landwirtschaft einfach erklärt
- ❧ Spannende Einblicke in den Berufsalltag
- ❧ Mehr auf [www.hessen-bauern.de](http://www.hessen-bauern.de) oder auf [@](https://www.instagram.com/hessensbauern) und [f](https://www.facebook.com/hessensbauern) bei [@hessensbauern](https://www.facebook.com/hessensbauern)

WWW.HESSENS-BAUERN.DE



# CONTENTS

	Side
Programme .....	6
Handling QR codes on the farms .....	12
Interesting facts about Germany .....	14
Day 2 - Visit to PTR Bischoff GmbH .....	19
Interest group Angus Hessen e.V. ....	22
Day 2 - Visit to the Sippel family farm .....	24
Day 3 - Visit to the Weidemann factory .....	28
Day 3 - Visit to Angus breeding farm Riekenberg .....	30
Day 3 - Visit to Angus farm Timo Oelkers family .....	34
Day 3 - Visit to the BIO farm Heinrich Bähre .....	38
Day 4 - Visit to the Tarmstedt exhibition and .....	40
State beef cattle show	
Angus Germany .....	42
Day 5 - Visit to the Gütitzer Agrar GmbH farm .....	50
Angus in Mecklenburg-Western Pomerania and Saxony-Anhalt .....	52
Day 6 - Farm visit Gut Karow GbR .....	56
Day 6 - Farm visit Angus from Havelland Thomas Hilgert .....	60
Breeding value estimation, studbook management .....	62
and breeding programme	
Relative breeding value for meat .....	70
Relative breeding value breeding performance .....	72
IG Angus Bayern introduces itself .....	74
Highlights 2023/24 ANGUS-WEST e.V. ....	78



**Bundesverband Deutscher Angus-Halter e.V.**  
Starke Rinder, starke Gemeinschaft.

**Federal Association of German Angus Breeders e.V.**  
Strong cattle, strong community.

[www.angus-bundesverband.de](http://www.angus-bundesverband.de)



## **Dear guests, dear Angus enthusiasts, welcome to Germany!**

The following is the travel programme for you. Here you will find the daily schedule and all relevant addresses.

### **Day 1, Wednesday 10.07.2024**

- 6 p.m Arrival in Frankfurt Individual arrival in Frankfurt
- Welcome desk at the hotel
- Steigenberger Airport Hotel Frankfurt,  
Unterschweinstiege 16, 60549 Frankfurt am Main, PHONE: +49 6969 750
- 8 p.m Greeting of guests and Dinner together at the hotel

### **Day 2, Thursday 11.07.24:**

- 8:30 a.m Departure past Giessen to Neukirchen, approx. 130 km
- 10:00 a.m Visit to PTR Bischoff GmbH, Niederrheinische Str. 21,  
34626 Neukirchen, PHONE: +49 6694 8070
- Followed by lunch on the farm
- 1:30 p.m Onward journey to Korbach,  
Auf dem Berge 7, 34497 Korbach
- 3:00 p.m Sippel factory tour incl. dinner and music
- 10:30 p.m Room check-in at the Welcome Hotel Bad Arolsen,  
Königin-Emma-Straße 10, 34454 Bad Arolsen, PHONE: +49 5691 8080,  
<https://www.welcome-hotels.com/hotels/bad-arolsen/>

### **Day 3, Friday 12.07.24:**

- 8:00 a.m Departure
- 9:00 a.m Factory tour at Weidemann GmbH,  
Elfringhäuser Weg 24, 34497 Korbach, PHONE: +49 5631 5016940
- 12:00 p.m Drive to Engensen
- 3:30 p.m Tour of the Angus breeding farm Riekenberg, Oelkers, Bähre  
Thönsen Str. 4, 30938 Burgwedel-Engensen, PHONE: +49 5139 87596
- Short journey to the hotel, check-in at Hotel Brunnenhof,  
Burgwedeler Str. 1, 30900 Wedemark, PHONE: +49 5130 979899,  
<http://www.brunnenhof-wedemark.de>
- Dinner at the hotel





scientifically  
tested

## Better appetite in diarrhoeic calves.

### Why do diarrhoeic calves drink less?

Because they suffer from acidosis.

### What is acidosis?

In diarrhoea calves lose not only fluids but also buffers. They dehydrate and overacidify.

### How dangerous is acidosis?

Acidosis rapidly increases within a few hours. The calves drink less and less. They keep losing fluids and buffers, become weaker and weaker and finally die.

### What can be done?

Give a **Bi-PILL** immediately when diarrhoea is diagnosed. 1 pill immediately and 1 pill each after the next 3 meals. Have **Bi-PILL** available.

### How about suckler cow management system?

Give 4 pills at a time.

### What does the Bi-PILL do?

It buffers acidosis in blood and rumen.  
The calves start drinking again.

### What is the Bi-PILL made of?

Sodium bicarbonate – a very effective buffer.

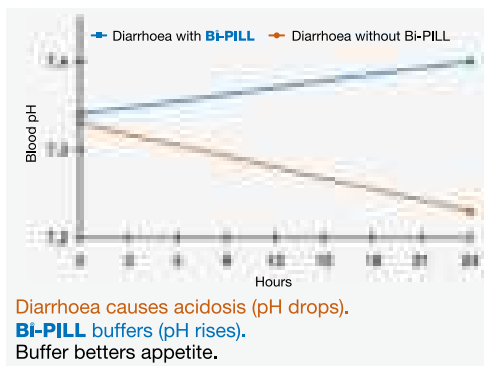
### What is the Bi-PILL legally?

Mineral complementary feed. GMP+ FSA assured.  
Suitable for organic farms.

### What losses does calf diarrhoea cause?

£80 per case in light diarrhoea, £200 per case in severe diarrhoea, because of treatment costs, more labour, more rearing days and higher risk of death.

### Lower the costs – give Bi-PILL!



### Bi-PILL. Scientifically tested.

Geishauser & Maag 2014: Züchtungskunde 86, 130–136.

# Bi-PILL. The first bicarbonate pill.



**VUXXX**  
THE PILL SPECIALIST

Von-Herz-Straße 47  
26871 Papenburg (DE)

T. +49 (0) 49 61 98 28 8-0  
F. +49 (0) 49 61 98 28 8-24

office@vuxxx.eu  
www.vuxxx.eu



#### **Day 4, Saturday 13.07.24:**

- 8:30 a.m Departure past Bielefeld and Bremen to Tarmstedt
- 10:00 a.m Visit to the Tarmstedt exhibition and state beef cattle show, Wendohweg 1, 27412 Tarmstedt,
- 4:00 p.m Onward journey to Hamburg
- 5:30 p.m Check in at the Holiday Inn Hamburg- Berliner Tor, Wikingerweg 2, 20537 Hamburg, Phone + 49 40 334 64 90, <https://www.ihg.com/holidayinn/hotels/gb/en/hamburg/>
- 7:00 p.m Dinner at the Schifferbörse restaurant, Kirchenallee 46, 20099 Hamburg, Phone: +49 40 245240

#### **Day 5, Sunday 14.07.24:**

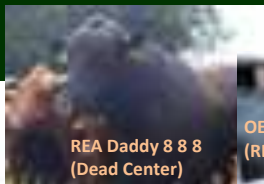
- Departure
- 9:30 a.m Harbour tour, followed by free time in Hamburg
- 1:00 p.m Onward journey to Steesow
- 3:00 p.m. Tour of the farm Gütitzer Agrar GmbH, Techentiner Weg 7, 19294 Karstädt
- Dinner on the farm
- 8:00 p.m Onward journey to Lake Plau
- Check in at the SCHLOSS Hotel am Fleesensee, Schlossstraße 1, 17213 Göhren-Lebbin, Phone: +49 39932 80 10 0, <https://schlosshotel-fleesensee.com/>

#### **Day 6, Monday 15.07.24:**

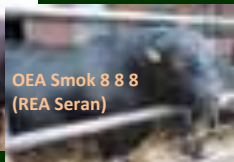
- 9:30 a.m Drive to Plau am See
- 10:00 a.m Tour of Gut Karow, Zarchliner Str 1, 19395 Plau am See, PHONE: +49 38738 70 321
- Lunch at the Karow estate
- 1:00 p.m Onward journey to Großderschau
- 2:30 p.m Tour of the Hilgert farm, Dossestraße 11, 16845 Großderschau, PHONE: +49 173 2832933
- Dinner and evening at the Hilgert farm
- Drive to Potsdam and check-in at the Hotel Dorint Sanssouci Potsdam, Jägerallee 20, 14469 Potsdam, PHONE: +49 331 2740, <https://hotel-potsdam.dorint.com>

# Hof Trumann

Eine ruhige Herde  
mit Familienanschluss



REA Daddy 8 8 8  
(Dead Center)



OE A Smok 8 8 8  
(REA Seran)



Dorado 8 8 8 RZF 117  
(Don)

Unsere Neuerwerbung  
vom FRT Verden 2024

Hako 8 8 7 (Hajo)  
Sieger FRT Meißen



TAZ Elanko (Eldorado) 8 9 7  
Einer unserer Verkaufsbullen  
auf dem FRT Verden



TAZ Siko 8 9 6  
(OE A Saab)

Langlebige Mutterlinien  
kombiniert  
mit exzellenten Vererbern

Seit



1969

## Angus-Zuchtbetrieb

Am Eichhof 3 29362 Hohne OT Spechtshorn

# 0160 / 444 888 7

trumann-hohne@t-online.de

### **Day 7, Tuesday 16.07.24**

- European Aberdeen Angus Secretariat in Berlin
- 9.00 a.m. Start of the conference at the hotel (public part)
- 12.30 p.m. Departure for Berlin
- 13.30 City tour of Berlin
- Followed by free time
- 17.30 Return to the hotel
- 20.00 Closing dinner at the hotel

For delegates:

- 13.00 hrs Afternoon programme of the European Angus Secretariat (small group)

### **Day 8, Wed 17.07.24**

- Journey home
- Breakfast at the hotel
- 8.00 a.m. Departure Transfer to Frankfurt Airport,
- Stop and small snack in Wehrda, Rhinaer Straße 2., 36166 Haunetal
- Onward journey to Frankfurt and individual journey home

Although every care has been taken in the preliminary planning, this information is subject to possible changes.

# ANGUS VOM VULKAN

AUS DEM VOGELSBERG  
FROM THE VOGELSBERG

- Zertifiziert als EG-Bio Betrieb
  - Ökologische Bewirtschaftung der Nutzflächen
  - Leistungstarke Herdbuchtiere aus bewährten und internationalen Linien
  - Red Aberdeen Angus Zucht seit 2010
  - Verkauf von Absetzern, Färsen, Kühen und Bullen
- 
- Certified as an EG-organic farm
  - Ecological management of farmland
  - High-performance herdbook animals from proven and international lines
  - Red Aberdeen Angus Breeding since 2010
  - Sale of weaners, heifers, cows and bulls



## Angus Zuchtgemeinschaft

Ruppel - Rücklinger  
Schottener Straße  
D-63678 Schotten-Eschernrod  
☎ 0 60 44 / 88 98 - 80 62  
info@angus-schotten.de

[www.angus-schotten.de](http://www.angus-schotten.de)

## Welcome to our farms!

We, the Bundesverband Deutscher Angus-Halter e.V., are proud to introduce you to our farms and animals. Everywhere on our farms you will find QR codes that you can scan with your smartphone. These QR codes will take you to detailed information about the farms and the animals kept. Do you particularly like an animal? You can use the search function to call up all the details about the animals.

We look forward to introducing you to German Angus breeding!

### Simply scan the QR code to get started!

With your smartphone and a QR code scanner app:

The most common way to use a QR code is to use a QR code scanner app on your smartphone.

Download a QR code scanner app from the App Store (for Android or iOS) and install it.

Open the app and point the camera at the QR code.

The app will scan the code and redirect you to the corresponding website.

### Without app and camera:

If you don't want to install an app or don't have a mobile phone camera available, there are alternative methods:

#### Use the web app:

Open the [webqr.com](https://webqr.com) website in your browser.

This site is very simply designed and focusses exclusively on decoding QR codes.

You have two options:

Hold the QR code in front of your smartphone's camera.

Upload a picture of the QR code to the website.

The data stored in the QR code is displayed directly on the browser screen.

## Enter the QR code in the browser window:

If you only have your mobile phone nearby,  
you can proceed as follows:

Open your web browser:

Launch your favourite web browser on your mobile device. Common browsers are Chrome, Firefox, Edge, Safari and Opera.

Click in the address bar at the top of the browser window.

Enter the URL of the desired website.

For example: <https://www.angus-bundesverband.de/de/eaf2024>

Confirm the entry:

Press the Enter key (Return) on your keyboard.

The browser loads the website you entered.



All infos here



**ANGUS & ABERDEEN-ANGUS**  
AUS DEM HERZEN OSTFRIESLAND'S

- Internationale Genetik in rot & schwarz
- Vermarktung von Zuchttieren
- Direktvermarktung - Hofladen

Angushot Freerksen  
Hegerweg 140  
D-26725 Emden-Petkum

Hofk. Freerksen  
Handy +49 171 997 13 10  
[www.angushot-freerksen.de](http://www.angushot-freerksen.de)

# Hello, how do you do? Moin! Or also Servus! In any case, welcome to the Federal Republic of Germany!

A country in Central Europe that consists of 16 federal states and has a lot to offer. So let's discover some of it on this tour.

## Here are some interesting facts about Germany:

- 84.7 million inhabitants
- Free, democratic and social constitutional state
- Berlin has been the federal capital since 1990 and the seat of parliament and government since 1991.
- Nine neighbouring states
- Bordering the North Sea and Baltic Sea in the north
- Bordering the Alps in the south
- diverse landscape, including the Alps in the south, the low mountain ranges, rivers such as the Rhine and Elbe as well as the North Sea and Baltic Sea.



— Route EAF 2024

## Some typical landmarks

### Neuschwanstein Castle:

This fairytale castle in Bavaria is internationally famous. Every year, over 1.5 million tourists from all over the world visit the castle, which was built by King Ludwig II. Its location in the foothills of the Alps makes it a popular holiday destination.



**You are looking for the pedigree of a certain animal?**

**Du suchst ein bestimmtes Tier?**



**No worries!**  
**Kein Problem!**

**Please use the last 5 digits of the ear tag for your search!**

Bitte gebe die letzten fünf Stellen der Ohrmarke in das Suchfeld ein

**or enter the full number with spaces**

oder die komplette Ohrmarkennummer mit Leerzeichen

**European Angus Forum Germany**  
**2024, July 10th to 17th**

Hosted by the Federal Association of German Angus Breeders (BDAG)

[www.angus-bundesverband.de](http://www.angus-bundesverband.de)





### **Brandenburg Gate:**

The Brandenburg Gate in Berlin is an iconic landmark. It was built between 1789 and 1793 and is inextricably linked to German history. During the division of Berlin, it stood on the border between East and West Berlin.

### **Cologne Cathedral:**

Cologne Cathedral is an impressive Gothic cathedral and the landmark of Cologne. It is one of the largest cathedrals in the world and a masterpiece of architecture.

### **Sanssouci Palace:**

This palace in Potsdam was the retreat of Frederick the Great. It is surrounded by magnificent gardens and is a UNESCO World Heritage Site.

### **Port of Hamburg:**

The Port of Hamburg is the gateway to the world and a lively place with historical flair. Here you can marvel at ships and enjoy the maritime atmosphere.

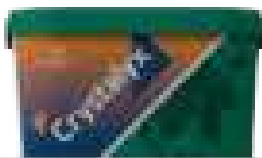
We will get very close to two of these landmarks on this tour. Do you already know which ones? If not, let us surprise you and accompany us through a part of Germany. And we'll also show you lots of beautiful Angus cattle.

Text: Kühl

Quellen:  
Top 23 Deutschland Sehenswürdigkeiten (mit Fotos) (voucherwonderland.com)  
Die Top 20 Sehenswürdigkeiten in Deutschland (meinestadt.de)  
Deutschland: Bevölkerung, Bundesländer & Fläche | StudySmarter  
Demografischer Wandel in Deutschland: Ursachen und Folgen -  
Statistisches Bundesamt (destatis.de)  
Bevölkerungsstand: Amtliche Einwohnerzahl Deutschlands 2023 -  
Statistisches Bundesamt (destatis.de)  
Liste der deutschen Bundesländer nach Bevölkerung – Wikipedia  
Wikipedia.org

RESEARCH  
PROVEN

Crystal<sup>lyx</sup>



## NUTRI COMPLETE

FOR DAIRY COWS, SUCKLER COWS,  
REARING AND FATTENING CATTLE

Contains highly  
biologically available  
trace elements  
(Hydroxy bond,  
organic selenium)

Supplies with minerals  
and vitamins tailored to  
the animals needs

Helps to compensate  
for natural fluctuations  
in the quality of the  
forage or pasture

Supports the  
physiological  
metabolic processes  
in stressful situations

[www.crystalyx.de](http://www.crystalyx.de)

## COMPANY TOUR

### Thursday, 11.07.2024

#### **PTR Bischoff GmbH**



Welcome to our care and therapy centre, where we offer all the prerequisites for professional, individual and loving care for our residents.

Our facility consists of a nursing home, which focuses on psychiatric care, and the Erlenhof therapy centre with external residential groups. This is an inpatient integration support centre for people with mental disabilities and/or addictions. The centre also offers assisted living for people with mental disabilities

For more than five decades, we have set ourselves the daily task of providing people with perspectives, respect, charity and patience, as well as freedom, protection and support, based on our fundamental Christian values. Holistic thinking, expertise and creativity help us to become awa-

re of the strengths and weaknesses of each individual and to offer appropriate help and support. Individualised and continuous planning, support and encouragement support participation in social life. A wide range of options for organising the day can lead to self-responsibility, personal success and self-confidence.

We offer a living space in a quiet, rural environment that makes it easier to deal with the illness and enables reintegration into society. Different forms of housing, support systems, therapy and leisure options contribute to customised help for the clients.

Our farm with around 120 Angus cattle has been an important part of the day-structuring therapy options for over 40 years. This is mainly mana-





## ranger® ABN60

### Weidezaungerät

9 V / 12 V / 230 V



### Energy Control

Blinklicht zur Anzeige der Restkapazität der Batterie oder des Akkus

### ECO POWER

Stromsparschaltung

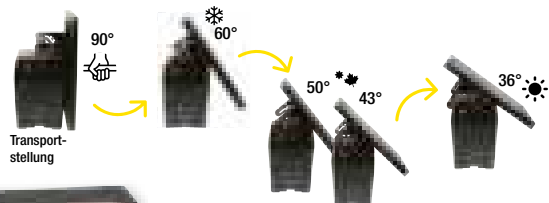
### Tiefentladeschaltung

Schont effektiv den Akku



Output: 0,6 J / 11.000 V  
Max. Zaunlänge: 6,5 km

## UNSERE EMPFEHLUNG: DER SONNE FOLGEN



### SUN FOLLOWER

Die richtigen Winkel sind voreingestellt!

## Solarkit 10 W

Automatischer Wechsel von Solarstrom auf 9 V Batterie oder 12 V Akku. Bei ausreichendem Sonnenlicht wird der Akku zusätzlich wieder aufgeladen.

Halterung mit 4 unterschiedlichen Anstellwinkel für die ideale Position zur Sonne.

Scan für mehr Infos!



<https://is.gd/2VBjVs>



Group of PTR Bischoff while Angus Bundesschau 2023

Photos: Schulte, Bischoff

ged by two full-time employees with the help of our clients, and colleagues from our facility's technical service are on hand to provide help and advice during work peaks. Since the beginning of Angus breeding, our herd has been registered in the herd book and actively participates in shows and auctions.

The daily contact between the clients and the animals is a win-win situation

for both sides. Our animals are used to close human contact from birth, but our clients also take responsibility for our animals and maintain close contact with them. The work in the stables and in preparation for shows and auctions in particular is carried out with dedication and care.

In winter, our animals are kept in loose housing with straw bedding and the most important location is Bu-



Admiral-daughter Brit



Elgin-daughter Etoile of Beechcreek

chenbach farm, where our suckler cows are stabled. Our herd name Beechcreek is derived from the small Buchenbach stream that flows alongside the barn and our pastures.

Our animals are marketed firstly as breeding animals, which are sold at the bull auction in Alsfeld and at the Best Of heifer championships as well as on the farm. On the other hand, we market our animals directly as meat from the farm, whereby a considerable proportion finds its way into our establishment's menu and is sold in cuts to end consumers.

For around 15 years, we have exclusively used Aberdeen Angus genetics on our farm, which means that we now have a herd with international genetics. Several targeted purchases in other European countries have increased the quality of our herd. Of

particular note are the purchase of a bull and three cattle from Lockerley Farms in 2016 and the purchase of two bulls in October 2019 in Stirling, Shadwell Earl P773 and Stouphill Elgin U209. We have also strengthened our herd on the female side with targeted purchases from various herds in the UK. Of particular note are purchases from Fordel, ALN, Eastfield and especially Penguin, from whom we were able to acquire various interesting cattle from ET.

We are optimistic about the future of our Angus breeding programme, which fits in so well with the overall concept of our facility.

Text: Bock

**Contact:**  
[www.bischoff-ptr.de](http://www.bischoff-ptr.de)

Stockbull Stouphill Elgin U209



## Interest group Angus Hessen e.V.

The Angus breed is one of the most common bred beef cattle breeds in Hesse with a tradition dating back around 70 years. The first animals from Great Britain made it into Hessian stables back in the 1950s. Since then, the breed has become a firm favourite and is still very popular with breeders and owners in Hesse today. It was therefore only logical that IG Angus Hessen e.V. was founded in the second half of the 1990s to act as a common voice for Hessian Angus breeders.

On the one hand, in an exchange with the breeding organisation Qnetics and the Hessen State Farm, which is always constructive and future-oriented. For example, the mandatory negative test for the myostatin gene was introduced as a criterion for Hessian auction bulls at an early stage. Furthermore, the interest group supports shows and auctions with prizes of honour.

On the other hand, our interest group serves as a forum for dialogue between our approx. 100 members at regular meetings and general meetings, in chat groups and in personal discussions when the need arises.

And finally, the IG and its board regularly organise breeders' trips to Germany and abroad, through which our members can and will make valuable memories and establish great contacts in Germany and beyond.

Thanks to the commitment of our active breeding farms, Hessian breeding animals are in demand throughout Europe and the excellent cooperation with Qnetics GmbH also supports our breeding farms.

All in all, it can be said that the Angus Hesse interest group is well positioned and, with the many young breeders and young breeders, there is no need to worry about the future of our Angus in Hessen.

Text: Bock



Photo: Schulte





A very warm welcome to our guests and friends from all over Europe from the Hessian Angus Breeders Club.

We stand for Black Angus and Red Angus with high performance and excellent health status born and raised in the middle of Germany in the heart of Europe.

[www.ig-angus-hessen.de](http://www.ig-angus-hessen.de)

## COMPANY TOUR

### Thursday, 11.07.2024

#### ANGUSHOF Sippel

We are passionate about working on and with the earth, in nature and, of course, with Angus. Our farm is now in its fifth generation at its current location in Korbach-Helmscheid. The former family name Baumann changed in 1993, when we, Friedrich and Ingrid Sippel, converted the mixed farm to suckler cow husbandry and arable farming. There were several beef cattle breeds to choose from. The decision was made in favour of Angus. We wanted a hornless breed. The character and meat quality convinced us then, as they do today. Since then, we have been breeding and marketing Angus cattle, predominantly in the red colour.

#### Sales at home and abroad

The herd consists exclusively of herd-book animals. There are around 30 calvings, mainly in the period from October to February. Breeding animals are sold from the farm and via the Qnetics breeding organisation. The animals find buyers in Germany and for export. Animals for slaughter



No concentrates - just milk

go to a producers' association, a co-operative and a farm butcher's shop that works with people with mental or intellectual disabilities.

#### No automatic feeders on the pasture

The grazing season for the herds runs from April to November. The bulls are kept on a permanent pasture. The groups with the cow-calves and the young cattle change pastures. Grazing takes place on permanent pasture. We want the weight of the first weighing to come from the mother's performance, so no concentrated feed or meal is fed on the pasture. Only the bull calves receive 1kg of their own meal about 2 weeks before they are weaned, so that the separation does not cause a sharp drop in





# ANGUSHOF

## Sippel



Friedrich und Ingrid Sippel

Auf dem Berge 7  
34497 Korbach - Heimscheid

+49 (0) 5831 - 8781



EUROPEAN UNION  
Protected Designation of Origin



Daughters of WGk Reimar at Bundesschau 2023

Photos: Schulte, Sippel, Schäfer

performance. The cow calves do not receive any meal.

### **Breeding successes**

We are regularly represented at state and national shows. Winning titles and good placings are achieved time and again. Several bulls have been sold to insemination centres. During the 2023 national show in Laasdorf, we provided the winning group in the progeny collections, 3 daughters of WGK Reimar (Red Rider x Ozzo).

### **We farm organically**

In 2008 we joined the Bioland association. Our son Markus takes care of the arable farming with great commitment. The crop rotation is broadly

based. Summer and winter crops of wheat, red grain, rye, spelt, malting barley and oil flax are grown as market crops. Lupins and beans are sold as feed grain. Clover or lucerne grass is an important addition to organic farming. Some of the clover and lucerne grass is used as winter feed for the Angus herd. We feed hay or silage in round bales. The cows are fed exclusively with forage.

### **Contact:**

Friedrich u. Ingrid Sippel  
Auf dem Berge 7  
34497 Korbach-Helmscheid  
PHONE: +49 5631-8781

[www.angushof-sippel.de](http://www.angushof-sippel.de) oder  
[www.angusrinder.com](http://www.angusrinder.com)



# VERBINDEN WAS ZUSAMMEN GEHÖRT: QUALITÄT UND GENETIK.

**Qnetics:** Ihr Partner für hochwertige nachhaltige Züchterfolge und Qualitätssicherung. Unser Know-how mit Nutzen für Mensch und landwirtschaftliches Nutztier hat das Ziel stetiger respektvoller züchterischer Verbesserung. **Vertrauen ist gut, Qnetics ist besser.**

## COMPANY TOUR

### Friday, 12.07.2024

#### **Weidemann: Quality and innovation in machine production**

Weidemann is a renowned manufacturer of machines that are used in various industries. With a long tradition of efficiency and a strong focus on quality and innovation, Weidemann has made a name for itself in the industry. Weidemann's product range is diverse and includes yard tracs, wheel loaders, telescopic wheel loaders and telehandlers and accessories - attachments and tyres.

Every machine that leaves the factory is a true „Weidemann“ - a multi-tool that is comfortable, safe and econo-

mical. Weidemann has also recently introduced a range of electrically powered machines, including the T4512e telehandler and the Hoftrac 1390e. These innovations emphasise Weidemann's commitment to sustainability and efficiency.

Weidemann stands for quality, innovation and efficiency. With a wide range of products tailored to the needs of different industries and a strong focus on customer satisfaction, Weidemann is a trusted partner in the machinery industry.

Text: Thore Kühl

Source: <https://www.weidemann.de/>



# The right solution for every requirement:

## The multi-functional Hoftracs®

Compact design, low center of gravity, small turning radius and powerful performance - these features have characterized the Weidemann Hoftrac® series for years.

In addition, you can work with them quickly, flexibly and safely. The large selection of attachments allow the machines to be used multi-functionally on different farms.



## Zero Emission – Think Electric!

CO2 emissions, noise and soot particles in buildings - those are a thing of the past! With the fully electric 1190e, 1390e and T4512e machines, you can work completely emission-free and with significantly reduced noise. This protects both the driver and the valuable livestock. Equipped with lithium-ion batteries in various power ratings, the models are perfect for indoor and sensitive areas.



## The powerful (Telescopic) Wheel Loaders

The articulated Weidemann wheel loaders make any type of work significantly more productive. That's because in addition to high functionality, great working comfort and excellent safety standards, they have plenty of power and endurance.

Even greater lifting heights are available with the telescopic arm: These machines have an increased lifting height and reach.



## The compact Telehandlers

The compact Weidemann telehandler are unique in their combination of lifting height, width and machine efficiency. Their all-wheel drive and the unique vls (Vertical Lift System) advanced driver assistance system make them absolutely stable and well equipped for many different work tasks. Excellent all-round visibility for the driver is a key feature of all telehandler models.



Discover the variety under:  
[www.weidemann.de/ca](http://www.weidemann.de/ca)



**WEIDEMANN**  
*designed for work*

## COMPANY TOUR

### Friday, 12.07.2024

#### Angus breeding farm Riekenberg

On the southern edge of the Lüneburg Heath, directly at the junction of the A7 and A2 motorways, I have been breeding around 60 red and black, German and Aberdeen Angus cows since 1972.

#### Farming area

I farm 90 hectares of grassland and 3.5 hectares of silage maize

The female weaners go out to pasture all year round and are fed round bale silage. The male weanlings are fed indoors on slatted floors and some

even on bedding with half grass and half maize silage and 1.5 kg of concentrated feed (18% protein at energy level 3). The calving period is from the end of September to December.

From mid-April to November, all cows have access to pasture. In winter, only grass silage and mineral feed are fed.

#### Machinery

My agricultural machinery consists of two tractors (70 and 110 hp four-wheel drive), two platform trailers (6 tonnes), a tipper (8 tonnes), a silage

Angus breeding is family-business...







## Katalog 2024 **GRATIS** anfordern!

- Elektrozaun-Systeme
- Weidetore und Panels
- Stalleinrichtungen und Agrartore



Tränketchnik



Fütterungstechnik



Behandlungsanlagen



**NEU**

Weidezaugeräte

**5** JAHRE  
GARANTIE

cutter and a pasture mulcher (4.5 metres).

In the contracting business, I run a Claas forage harvester with a 12-row maize header and a 3-metre pick-up, a large-capacity silage trailer (42m<sup>3</sup>) with my friend Timo Oelkers, and I employ a classmate on a €538 basis.

### Angus breeding

I breed in the lowland moor between Hanover and Celle with +/- 60 red and black German and Aberdeen Angus cows. I also use embryo transfer for breeding. We inseminate for one week during the mating season (20 December).

### Marketing

I market cows and calves, pregnant cattle, weanlings and stud bulls; I also regularly supply the beef cattle day in Verden.

Text: Riekenberg



We like cows that look like this. Here Rea Galta.

### Contact:

Angus breeding farm Riekenberg  
Heinz-Wilhelm Riekenberg  
Thönser Str. 4 | 30938 Burgwedel  
Tel.: +49 51 39 - 8 75 96  
[www.angus-riekenberg.de](http://www.angus-riekenberg.de)



REA Stardom s at Tarmstedt fair ground

Photo: Schulte, Riekenberg

# EuroArgen



## ARGENTINE GRASS GENETICS FROM SPAIN TO THE WORLD

Experience & Innovation  
with a professional staff.

**NEW STOCKS**

[euroargen.fervill.com.ar](http://euroargen.fervill.com.ar)

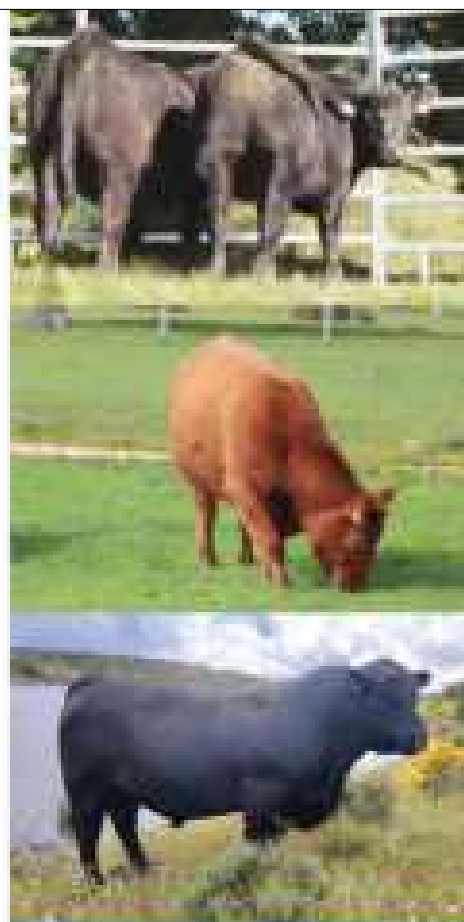
+54 291 53 59 941 / +34 698 48 12 11

[info@euroargen.fervill.com.ar](mailto:info@euroargen.fervill.com.ar)

[instagram.com/euroargen/](https://www.instagram.com/euroargen/)

[facebook.com/euroargen](https://www.facebook.com/euroargen)

[YouTube Euroargen](https://www.youtube.com/Euroargen)



EMBRYOS



SEMEN



PRO ADVICE



BEEF



AGTECH

## COMPANY TOUR

### Friday, 12.07.2024

**Angus breeding farm**  
**Family Timo Oelkers**

#### **Farm overview**

We manage an approx. 155 ha fodder production farm, which consists of approx. 65 ha of arable land and approx. 90 ha of grassland.

On our partly very light soils, crop production is very limited. We currently grow maize for rearing bulls, fattening and rye as a market crop. The rye straw is brought in after the grain harvest to give the animals a clean and cosy to lie down during the winter months.



The resulting manure is used the following year as a natural fertiliser. Our 50 Angus cows and replacements are kept on approx. 90 hectares of grassland, which is located in the largest nature reserve in Lower Saxony. Due to the robustness and frugality of Angus cattle, they adapt perfectly to our location and climate conditions. Most

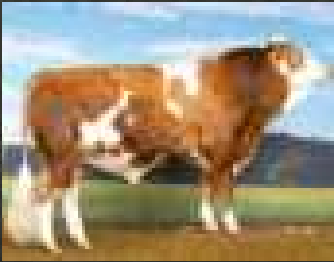
Bullenmaststall auf dem Betrieb Oelkers  
Bilder: Oelkers





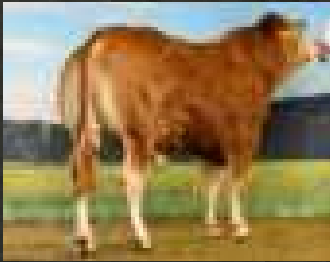
BÄUERLICH. VIELFÄLTIG. NACHHALTIG.

# HÖCHSTE FLEISCHQUALITÄT & Leichte Geburten



**DONNY PP**

Der Fleckvieh-Fleisch-Bulle!



**King PP**

Der neue Limousin!




**Eder PP**

Der neue schwarze Angus!

 fleckvieh\_bvn

 BVNNeustadt

 [www.bvn-online.de](http://www.bvn-online.de)

of the year the herds graze on the extensively farmed pastures.

We practise suckler cow husbandry, the most natural form of cattle farming. The calves stay with the cows for almost a whole year and are reared on mother's milk, pasture grass and energy feed. The animals spend the winter months in open pens on straw. Only grass silage and hay from our own farm is used as winter feed.

Our Angus cattle grow up in species-appropriate husbandry and with free movement in a herd, which keeps them naturally healthy.

We fatten our bulls in our pedal manure barn with open housing, which was built in 2015 and offers space for 120

animals. We are currently expanding the fattening area by 110 places and build a new barn for this purpose.

We will then have 230 fattening places for Angus bulls, which will be fed with corn silage, grass silage and a mixture of rye meal and rapeseed meal.

**Contact:**

Angus breeding farm  
Family Timo Oelkers  
Bäckerstraße 4  
30938 Burgwedel-Engensen

timo.oelkers@freenet.de

PHONE: +49 5139 959185

Mobile: +49 177 7526390

[www.angusrind-oelkers.de](http://www.angusrind-oelkers.de)





# Erneuerbare sind unsere DNA

In 16 Ländern sind wir mit Wind-, Solar- und Speicherprojekten (Batterie und Wasserstoff) erfolgreich.

**ABO  
WIND**

## COMPANY TOUR

### Friday, 12.07.2024

#### BIO Betrieb Heinrich Bähre

I have been running our farm full-time since 1972, initially with dairy cows. We started with suckler cows in 1990 and built up Angus breeding in the following years. I run the farm alone. Most of the farm work like maize chopping, currently grass silage, is done by the machinery ring. Since 1995 I have been running my farm according to organic guidelines.

Our animals are kept on pasture all year round. In winter, the animals are fed daily with grass silage and round hay bales in feed troughs. The farm covers a total area of 123 hectares within a radius of 12 kilometres around the farm.

Of the total area, 57 hectares are arable land, which mainly consists of sand with 20 points. The remaining 66 hectares are grassland divided into fenland and 40 hectares of bird sanctuary. The grassland is either cut on 16 June or 1 July or by grazing with two cows with calves per hectare.

The farm's livestock consists of one breeding bull and 24 suckler cows and their offspring.

This farm demonstrates a balanced utilisation of arable land and grassland and a responsible approach to animal husbandry.

#### Contact:

Bäckerstraße 2  
30938 Burgwedel, Engensen  
PHONE: +49 5139 87830







psst...  
Europa-Angus-Forum  
in Tarmstedt 2024

Ja, klar, weiß  
doch jeder!

Wir begrüßen alle Anguszüchter und Gäste  
des Europa-Angus-Forums in Tarmstedt 2024!

*We welcome all Angus breeders and friends  
of the European Angus Forum in Tarmstedt 2024!*

Verden  
Philipp Beermann

Tel.: +49 (0)4231 670-114  
Mail: [pbeermann@masterrind.com](mailto:pbeermann@masterrind.com)

Meißen  
Corinna Bräschke

Tel.: +49 (0)3521 4704-67  
Mail: [cbräschke@masterrind.com](mailto:cbräschke@masterrind.com)

 **MASTERRIND**  
Förderkreis der Masterrinder

# Besuch der Tarmstedter Ausstellung und Landesfleischrinderschau

**Saturday, 13.07.2024**



## GELÄNDEPLAN

EINGANG  
NORD



<b>ZH 1 - 3</b>	Zelthallen: Bauen & Wohnen, Haushalt, Tourismus, Gesundheit sowie Accessoires
<b>ZH 5 - 7</b>	Zelthallen: Fachbereich Landwirtschaft
<b>M &amp; KM</b>	Marktplätze, Essen & Trinken, Fahrgeschäfte, Kinder-Spaß
<b>A</b>	Freigelände: Haus & Garten, Bauen & Wohnen, Energie- & Umwelttechnik, Auto sowie Accessoires
<b>B - H</b>	Freigelände: Landwirtschaft, Landtechnik, Kommunaltechnik sowie Technik für Handwerk & Gewerbe
<b>T</b>	Freigelände: Tierzucht, Tierschauen



Änderungen vorbehalten

## Angus in Germany



Quiet. Early maturing. Deep-bodied with good pasture suitability. And all this in single-coloured red or black and generally economical. This is how our breed, the Angus breed, can be described in a few words.

Angus cattle found their way to Germany at the beginning of the last century. Around 1920, a hundred years ago, the first, initially mainly black beauties grazed on German pastures. The first herd book for Angus was founded on 30 July 1955 in Haarstorf in the district of Uelzen. Herdbook management is now the responsibility of the respective breeding associations. But for forty years now, since May 1984 to be precise, the Bundesverband Deutscher Angus-Halter e.V. has existed in its current form as an organisation representing the interests of Angus cattle breeders and keepers.

Today, both colours, red and black, are intensively bred in Germany and internationally. In this country, red Angus also enjoy great popularity. However, they are always one thing: simply unicoloured. But they're always elegant!

It is not just the colour that is elegant. It is the overall appearance of this breed of cattle in the medium frame. Attention is paid to the following characteristics: the light, short head with a fine bone structure. Fine, yet with deep and broad leg muscles. Also in the inner thigh. With a uniform width of the upper body, special emphasis is placed on tight transitions and harmonious proportions. In addition to the correct formation and position of limbs and hooves, great importance is attached to a perfect movement sequence. When it comes to muscling, particular attention is paid to

Strong red cows-the herd shown 2021, when Artur Ruppel and Werner Rücklinger got honoured for their breeding-passion.  
Photos: Grünhaupt, Schulte, Bauereiss, Oldenburg



# ANGUS

aus Brandenburg  
& Berlin

**mehr als 1.000 Herdbuchkühe**  
more than 1 000 herdbook cows



**große Bestände mit breiter Genetik**  
large herds with broad genetic diversity



**jährlich stationsgeprüfte Bullen**  
station-tested bulls every year



**Wir wünschen allen Angus-Fans ein gelungenes Züchtertreffen!**  
Whishing every Angus fan a successful European Angus Forum 2024!



good shoulder, back and haunch development. In addition, the back and shoulders are broad and excellently muscled. In combination with the elongated build and deep ribs, they achieve a torso that characterises an ideal grazing cow. As if made for forage intake. And this forage is available in a wide variety of qualities, depending on the location. So they have to be one thing:

Adaptable. And that is what Angus are. They are excellent at adapting to different locations and environmental conditions. This is one of the reasons for their distribution. They can also be found on a wide variety of farms throughout Germany, whether on organic farms, in conventional bull fattening or in extensification programmes. Whether kept indoors or on pasture all year round, their robustness and adaptability are unrivalled. Angus are also economical. Whether grazing calves, heifers, steers or bulls, male or female, the calm and sociable animals have a very good fattening capacity. Daily weight gains of 1,300 g can be achieved with a good



Look at her! REA Gea R. Reining German Champion Cow.

basic feed and little compensatory feed. They are efficient feed converters and young bulls achieve slaughter weights of 380 kg at the age of 15 to 16 months. In addition to the competitive fattening performance, the genetically determined, pronounced marbling and fine fibres of the meat are well known. The intramuscular fat ensures tender and juicy meat, so that Angus meat is in high demand due to its quality and variety of flavours. If the valuable cuts on the carcass are well developed, the animals show a clear genetic superiority in the characteristics of tenderness and marbling.

But there is much more here. Dr Sabine Schmidt from the Rinderallianz reports: Breeders value the calving ease, vitality, sociability and early maturity of their Angus cattle, but also their milk yield for rearing calves, suitability for grazing and adaptability to different climatic and feeding conditions, as well as their ability to produce an excellent carcass from the basic feed. Unfortunately, the ex-



German Champion Bull – AZH Gust with his keeper Sebastian Engling.



AZR Amira: Landessiegerkuh 2023

## Anguszucht Rohleder „AZR“



Gaernweg 8  
35114 Haina-Löhlbach  
06455 755786  
E-Mail: [angus-rohleder@t-online.de](mailto:angus-rohleder@t-online.de)

cellent meat quality is often not sufficiently honoured by the usual marketing channels in Germany; only on farms with direct marketing are the special characteristics in terms of tenderness and marbling increasingly recognised. However, Angus are now also in demand in special quality meat programmes (e.g. at Block House) or are sought-after mating partners on organic farms for the production of high-quality beef. Due to their calving ease, pedigree Angus bulls are used for heifer matings in many large pure- or crossbred suckler cow herds like Fleckvieh, Charolais, Uckermärker to produce commercial calves for fattening.

#### Angus at the testing station

In addition to the use of efficient national and international genetics, the basis for success is above all consistent performance testing and selection. In addition to field testing (a total of almost 2,000 weanlings and yearlings were weighed in the 2022/23 breeding year), Mecklenburg beef cattle breeders, for example, also have the option of station testing of their breeding bull candidates.

At the Laage station, the growing young bulls complete a 140-day test period under standardised environmental and feeding conditions. The ration is optimised in such a way that the genetically determined performance differences between the bulls are revealed, but the normal skeletal



Docility – perfectly show by this bull.

development and future breeding use of the bulls are not impaired. Since 2009, over 500 bulls, including 86 Angus, have been tested at the Laage testing station. The results can be described as very impressive. The Angus bulls achieved average daily test weight gains of 1,527g (with a peak of >2,000g) and lifetime weight gains from birth to the end of the test of 1,382g (with a peak of >1,700g). At the end of the test, the back muscle area of the bulls was measured by ultrasound. At this time, the bulls were on average 390 days old and weighed 575kg alive. The back muscle area was 88.2 cm<sup>2</sup> and the back muscle area index in relation to weight was 1.11 on average.

Angus bulls are also in demand for pure breeding and crossbreeding in dairy cows. When purchasing Angus bulls, a balancing act has to be performed to select bulls that are of interest to the purebred Angus breeder and will bring him breeding progress, but that are also suitable for beef-on-





# BOW

*aberdale angus*



**HW Madame Pride V713**

HF-EI-Tigre 28U x HW Madame Pride S632



**BOW Black Rock**

HW Black Rain x HW Madame Pride V713

Junior stock bull by Dani Wintereder  
BOA Angus Austria

## **Bornwiesenhof**

Susanne und Karl-Heinz Krach . 36166 Haunetal Odensachsen . karl-heinz.krach@t-online.de  
www.bornwiesenhof.de

dairy matings for Holstein breeders. This is because Angus bulls are becoming increasingly popular as cross-breeding partners in dairy herds due to their calving ease.

Maternal. A word that should always characterise a suckler cow. But Angus in particular. They make excellent suckler cows. And there are several reasons for this: The rump is long, wide and slightly sloping. An ideal prerequisite for easy calving. Angus are also one of the most precocious breeds and the young cattle can already be used for the first time at 15 months. The first calving then takes place easily at two years of age. The heifers can therefore be ideally integrated into the farm processes and the annual calving season. At three years of age, the cows are fully grown and reach their final weight of around 700 kg.

Easy births and calm mothers ensure that calving itself runs smoothly. The calves are vigorous and develop excellently thanks to the good milk yield of the Angus cows. Long suckling periods of over nine months and correspondingly good weaning weights are easy to realise with Angus.

The above-average intake capacity for coarse feed, the easy handling due to the calmness and the good performance of the mothers and the fattening cattle justify the high profitability of the Angus breed and ensure a high distribution also in Germany. It is therefore essential that these typical breed characteristics are preserved. The meat is in demand and is also ideal for direct marketing.

Text: Kühl, Dr. S. Schmidt, Brinette

No matter if inside or outside, we need good cows and lively calves



# Angus aus Schleswig-Holstein

Wir bieten Ihnen Spitzen-Genetik und ein ständiges Angebot an Zuchttieren mit höchsten Gesundheitsstatus!

304197

## CALVIN ANG

HA/2 Comet + Cooper + Zenoite

- Leistungsvermögen
- Erbsitzung Bemuskelung
- Typstar

324549

## PIT AA

Prinzessin + Big Mary + Heddes BSA

- Hervorstechendes Rassemerkmal
- Interessante AA-Genetik
- Färbung R/R/R

324886

## CARUSO AA

HA/2 Comet + Red Lady MC-CC  
Damar ZW + Lady MC Worldwide JA

- Internationale Genetik
- Hohe Zuchtwerte
- Extensiv



Rinderzucht Schleswig-Holstein eG  
Reidsturger Straße 176  
24537 Neumünster  
[www.rshg.de](http://www.rshg.de) | 04331 905 300 | [rshg@rshg.de](mailto:rshg@rshg.de)



GGI-SPERMEX

Zuchtgenetik von Tübingen!

**RSH**  
Rinderzucht Schleswig-Holstein eG

## COMPANY TOUR

### Sunday, 14.07.2024

#### Güritzer Agrar GmbH

Güritzer Agrar GmbH is part of the Steesower Agrarland GmbH group of companies. It cultivates around 2,700 hectares of arable land and grassland. Seven employees and one apprentice carry out the work on the farm. The soil value of the cultivated land is between 15 and 25 soil points. The annual rainfall rarely exceeds 500 litres/m<sup>2</sup>. Together with the pre-summer drought, these are the three key factors that have a decisive influence on farming here. The main farming areas are idyllically and uniquely situated in the Meynbach valley and along the old and new Elde near Ludwigslust. Here, nature conservation and extensive forms of farming go hand in hand.

With our poorer soil values and low rainfall, our growth in grassland and arable land is manageable. We accept these conditions and try to make the best of them. The Angus breed is therefore best suited to this region. These animals make a great deal out

of very little (growth). They are frugal, sociable and very maternal.

Around 770 suckler cows of the Aberdeen-Angus breed are kept on the farm. The offspring are reared and fattened by the farm itself. A small proportion of the Aberdeen-Angus are registered in the herdbook, and breeding bulls are purchased for this small group. The remaining herds are created from our own reproduction. The animals are divided into groups of 30 to 40 animals per herd and calving is evenly distributed over the first three quarters.

In the region, we attach great importance to personal contact with the people in the villages. At our annual landowners' meeting, we provide information about the current challenges and showcase our best animals and their products. Digitalisation is helpful, but the spoken word counts more.



Photos: Nagel



# UNSERE Zuchtbullen



**Rockefield** (mittlerer Rahmen, kompakt, tief, Fleischqualität), der Gemütliche... Seine Nachkommen werden für die Produktion von Nachkommen mit sehr guter Fleischqualität genutzt

geb. 12.09.2016                      RZF: 93  
Vaterlinie: RED BIEBER W384  
Mutterlinie: RED HAZEL BLUFF MS CHB 11P

**Farmer** (mittlerer Rahmen, Länge, Tiefe, Reproduktion) der Schicke... in ihm ist Typ und Fleischqualität vereint. Durch den dunklen Knopf ist er markant.

geb. 19.08.2016                      RZF: 105  
Vaterlinie: Boelling Roed Fabel (Thump 2T)  
Mutterlinie: Red Fine Line Mulberry



**Erasmus** (tiefe Rippe, vererbt leichte Kälbergeburten, viel Milch), sehr umgänglich, zum Aufbau zukünftiger Mutterkuhherde geeignet

geb. 03.10.2017                      RZF: 111  
Vaterlinie: RED MRLA 87Y  
Mutterlinie: RED HAZEL BLUFF MHB93S

Unsere Zuchtbullen sind alle in Deutschland geboren und handverlesen. Ihr genetischer Ursprung findet sich jedoch in Kanada. Nicht nur der mittlere Rahmen, die Mütterlichkeit, die Leichtgeburt und das gute Futterverwertungsvermögen sind wichtige Entscheidungskriterien, sondern auch die Fleischqualität. Was hier zu Lande noch nicht viel Beachtung findet, wird in Kanada schon sehr genau geprüft und züchterisch bearbeitet. Die feinfaserigkeit (Tenderness) und die leicht durchziehende Fettstruktur bringen am Ende den besten Geschmack. Leider gibt es hier noch keine Meßmethode dafür und daher setzen wir weiter auf diese interessante Zuchtichtung.

Unsere jetzigen Tiere bringen den gewünschten mittleren Rahmen und eine gute Futterverwertung mit. Dies kommt unserem Futterangebot sehr entgegen. Aus wenig machen diese Tiere sehr viel und somit ist auch in trockenen Jahren das Beste aus der Fläche und letztendlich aus den Tieren herauszuholen. Es macht im extensiven Landbau keinen Sinn teures Kraftfutter den Tieren zu füttern, damit sie schneller wachsen. Sie sollen aus dem genetischen Potenzial heraus das vorhandene Futter bestmöglich umsetzen und natürlich wachsen.

## Angus in Mecklenburg-Western Pomerania and Saxony-Anhalt

In the RinderAllianz breeding region, which comprises the federal states of Mecklenburg-Vorpommern and Saxony-Anhalt, beef cattle breeding is characterised by a wide variety of breeds, farm sizes and structures. According to the cattle census of November 2023, 56,602 suckler cows were kept in Mecklenburg-Western Pomerania and 26,601 suckler cows in Saxony-Anhalt. That is 13.3% of all suckler cows in Germany.

### Angus in 2nd place in the region

With 1,729 registered herdbook cows, the Angus breed ranks second in the breed statistics in the breeding region behind Fleckvieh-Simmental with 2,051 breeding cows. This means that in Mecklenburg-Vorpommern about every 5th beef cattle herdbook cow is an Angus cow! There are a total of 71 Angus breeding farms, 32 of which are in Saxony-Anhalt and 39 in Mecklenburg-Vorpommern.

### Angus successes at auctions and shows

At the auctions organised by RinderAllianz GmbH, the Angus bulls on offer have regularly achieved above-average hammer prices in recent years and have been sold throughout Germany (and beyond). On average over the past five years, the Angus bulls have been around €300 per bull above the average of the overall auction. At the same time, their share of the total number of bulls increased from 11% to 16%. In 2021, the Aberdeen-Angus bull Aramis (Netherton Archie J501 x HF Kodiak 5R) bred by Steffen Stickel, Winkel, wrote a success story and realised the highest hammer price ever achieved at a RinderAllianz beef cattle auction at € 10,400!

Wide range of insemination genetics  
Angus bulls are also in demand for pure breeding and crossbreeding. They are therefore naturally part of the



At the Angus breed meeting in May 2023, Jürgen Neuling's herd in Groß Grabenstedt was also visited.  
Photos: Pohl, Schmidt

# Angus

More than just beef

Rinder  
Allianz



**Red Berry 10.204681**  
Aberdeen Angus

**HORRIDO 10.204898**  
Aberdeen Angus

Beef up your  
knowledge – scan QR!



# RinderAllianz



With a hammer price of € 10,400, Angus bull Aramis made history at the 2021 online bull auction!



Angus genetics from the Keunecke breeding centre in Lauenhagen are also in high demand at the auctions.

portfolio at the Woldegk insemination centre. When purchasing them, a balancing act has to be performed to select bulls that are of interest to the Angus purebred breeder and bring him breeding progress, but which are also suitable for beef-on-dairy matings for Holstein breeders. RinderAllianz currently has four Aberdeen-Angus bulls on offer:

- Barron 10.204676 (also sexed male)
  - genetics, calving ease, breed type
- Fiete 10.204588 - calving ease, meat inheritance, feet & legs
- Red Berry 10.204681 (also sexed male) - beef performance, functionality, show potential
- Horrido 10.204898 - international outcross pedigree, weight gain, fleshing potential

### Further information:

<https://www.rinderallianz.de/bullen/fleischrind/>. An Angus semen mix of Red Berry, Fiete and Barron is also available for beef-on-dairy use.

Websites for beef cattle farms

A new offering from RinderAllianz is websites for beef cattle farms. Using a kind of modular system, breeders have the opportunity to present their breeding centre, breeding philosophy, special focuses, top animals and animals for sale on the Internet and to provide regular news updates. The offer is still under construction. Steffen Stickel was one of the first breeders to make use of it. Information about his business can now also be found at <https://www.ra-fleischrind.de/zuechter/stw-anguszucht-stickel/>

Text: Dr. S. Schmidt





- ZUCHT roter Aberdeen Angus seit 2008
- PRODUKTION eigener Embryonen in Canada
- VERKAUF von Angusrindern ab Hof, deutschland- und europaweit

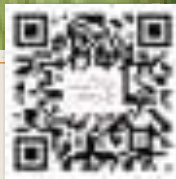
## NEUE GENETIK

### Red Rebell von Christelhoi

geb. 29.08.2020

RZF 117

Vaterlinie: Bieber Roosevelt W384  
Mutterlinie: Red Fine Line Mulberry



### Nashville von Christelhoi ET

geb. 03.08.2021

RZF 115

Vaterlinie: Red Rust North Dakota 27B  
Mutterlinie: Red KBJ Missie 019Z  
(Red Cockburn Ribeye)

### Trapper von Christelhoi ET

geb. 02.08.2021

RZF 110

Vaterlinie: Paintrock Trapper  
Mutterlinie: Hazel Bluff Tradition 58X  
(Designated Elite Dam since 2017)



# Betriebsbesichtigung Montag, 15.07.2024

**Gut Karow GbR**

## Management

Estate manager

Head of forestry department

Head of livestock department

Estate secretary

## Site conditions

- Altitude: 64 m above sea level
- Average annual temperature: 8.7 °C
- Average annual precipitation: 655 l/m<sup>2</sup> (2000-2023)
- Soil: Heterogeneous soil zones per area consisting of sand, loamy sands, sandy loams with Ø 30 soil points
- Terrain: slightly hilly
- Economic location: good transport links via the BAB 19 motorway (8 km) and the federal B 192 and B 103 motorways running through Karow
- Total farm area rounded off

## Factor equipment

- Utilised agricultural area: approx. 1,000 ha arable land approx. 426 ha grassland
- Forest area: approx. 1,230 ha
- Crop rotation  
Winter oilseed rape - Winter wheat - Winter barley  
Barley/ wheat - catch crop - maize/ pea



## Yields 10-year average:

- Oilseed rape 32 dt/ha
- Wheat 70 dt/ha
- Barley 68 dt/ha
- Rye 69 dt/ha
- Rye GPS 242 dt/ha
- Maize silage 366 dt/ha
- Pea 30 dt/ha (two year rotation)

## Labour force

- 4 farmers
- 2 foresters
- 1 gardener
- 2 trainees
- 1-2 seasonal workers/interns

## Cattle farming

- Herd size 537 head
- 238 herdbook Angus cows (Aberdeen Angus and Deutsch Angus)
- 10 sires
- approx. 30 young female cattle for own herd replacement
- approx. 25 young breeding bulls for farm-gate marketing
- Colour breakdown of the Angus herd  
60 % red  
40 % black
- Two main calving periods:



**BLOCK  
HOUSE**

**Block**Foods

September/ October and  
January/ February

- April to November Grazing
- Stable housing on straw with a paved run in the winter months

### **Buildings**

- 4 stables with up to 200 feeding places on the estate (11.7 ha)
- Outdoor climate stable approx. 1 km away
- Grain store with a capacity of approx. 3,000 tonnes
- Former grain store
- Fertiliser store (600 t)
- Various machine halls
- Social building for the employees
- Administration building
- Manor house/ residential building

### **Machinery**

- 7 tractors (70 - 414 HP) from Fendt, Valtra and John Deere
- 1 telescopic loader, 1 Schäffer loader
- 1 combine harvester (12.30 m cutting width) from Claas
- Complete in-house mechanisation for tillage, sowing, fertilisation, plant protection, grassland management, transport and straw harvesting
- Purchase of additional services: Maize chopping incl. transport and silo construction, Grass harvesting via loader wagon incl. silo construction and fermentation residue spreading via drag hose and slasher.

### **Production overview**

The Karow estate is based on the three branches of arable farming, forestry and the production of production of Angus breeding animals. Both covered and open heifers and breeding bulls are produced for further pedigree breeding. All other Animals and the weanlings are sold via the Rinder-Allianz to two fatteners in Lower Saxony and North Rhine-Westphalia.

Another marketing option is to participate in various auctions and exhibitions. Thanks to the extensive rearing of the Angus cattle, some of the breeding animals can be in the organic sector.

The Karow estate has a biogas plant with a nominal output of 624 KWh plus a 150 KWh ORC plant. This is operated in co-operation with an energy company from Mannheim.

The substrates (maize and solid manure) are supplied and disposed of via the Karow estate.

The plant is operated by the Mannheim-based company.

The market crops, with the exception of rapeseed, are stored at the Karow estate during the harvest and sold to the agricultural trade or via trading platforms by May of the following year at the latest.

The rapeseed is delivered directly to the trade during the harvest.

Due to the heterogeneous soils, appli-

cation maps are used from sowing to fertilisation and plant protection. This ensures that the distribution of seed, fertiliser and growth regulators fertilisers to the corresponding yield capacity of the soil zone within an area.

**Contact:**

Zarchliner Str. 1, 19395

Plau am See

Telefon: +49 38738 70321

[www.gutkarow.de](http://www.gutkarow.de)



## COMPANY TOUR

### Monday, 15.07.2024

#### Angus from the Havel region

Thomas Hilgert's farm in Großderschau an der Havel in Brandenburg started out as a sideline a good 30 years ago with ten hectares of grassland and a few Simmental cows. Over the years, more and more land and cows were added, and so the trained milking machine electrician completed a second vocational training programme as a farmer and passed his master craftsman's examination.

#### Angus for 25 years

The first Angus cows arrived on the farm in 1999. Thomas Hilgert now farms 450 hectares of arable land and 300 hectares of grassland, on which 150 Angus cows graze all year round. He deliberately switched to Angus because he was impressed by the easy calving, maternal behaviour and good feed conversion. 'On my site, the Angus get the best out of it for me,' he says. Thomas Hilgert is convinced that producing excellent carcasses without a lot of concentrated feed is the future. His animals mainly graze lowland moorland in the Rhinluch and the Dosse-Bruch, which are flooded areas in nature reserves



where no high-quality forage grows. Angus cattle are predestined for this.

#### Well-planned breeding success

In the herd, which is divided into several herds, six to eight bulls in red and black are responsible for covering the cows. Thomas Hilgert has never been able to commit himself to one colour, he believes that you have to be able to serve both directions. Calving takes place entirely in spring, as this allows the calves to fully utilise the fresh grass. As all his animals are also registered in the herd book and he constantly uses top bulls from all over the world, his success in breeding is no coincidence. Large batches of breeding animals are constantly going abroad and into German breeding. Thomas Hilgert also regularly supplies the testing station and auction in Brandenburg.

#### Contact:

Thomas Hilgert  
PHONE: +49 172 6042324  
E-mail: Thomas.Hilgert@t-online.de

# Angus aus dem Havelland

Aberdeen Angus Black and Red



Thomas Hilgert  
Dessestraße 11  
16845 Großdörschau

0172 6042324  
[www.angus-hilgert.de](http://www.angus-hilgert.de)  
[thomas.hilgert@t-online.de](mailto:thomas.hilgert@t-online.de)

## Stud book management and breeding programme in germany

Beef cattle breeding is managed nationwide by twelve associations. The members of these associations are mainly herdbook farms, which are supported with regard to marketing and advice, as well as the organisation of breeders' meetings and animal shows.

The basis for studbook management are the animal welfare regulations of the European Union, the Federal Republic of Germany and the relevant

federal states. As well as the Livestock Traffic Ordinance, the guidelines and recommendations of the the Bundesverband Rind und Schwein. The herdbook is formally maintained by the cattle breeding associations, but all recorded data is collected centrally by Vereinigte Informationssysteme Tierhaltung w.V. in Verden. The evaluation of the data, i.e. the breeding value estimation, is also coordinated from Verden.

Herdenbild auf dem Betrieb Markus Göbel  
Bilder: Schams





# AM **ABERDEEN** **ANGUS**



**WEHRDA**  
**GERMANY**

*Zuchttiere, Sperma, Embryonen*

[\*\*www.allenmarkter.at\*\*](http://www.allenmarkter.at)

**+ 491607007377**

*In Kooperation mit*

- Mittenhof Aberdeen Angus -*
- Allenmarkter Angus -*

The overriding aim is to breed cattle that 'meet the economic requirements of suckler cow farms and the crossbreeding with beef cattle bulls in dairy herds as closely as possible.

For beef cattle breeds, the dam's side should fulfil all requirements to ensure the rearing of one well-developed calf per year. On the sire side, high-performance bulls with correct limbs and high normal birth rates should be aimed for.

In order to be able to classify the results of the performance test and divide the animals within the population into herdbook classes based on performance, it is first necessary to look at the breeding programme. All parameters are defined in the breeding programme in order to enable the comparability of all animals within a population. This is the only way to achieve directed selection. In order to be able to establish comparability, a nationally standardised breed standard is essential. This is officially defined for each breed by the German Cattle and Pig Association (BRS) in the form of the breeding objective.

On the basis of the Breeding Organisation Ordinance, the herdbook is initially divided into a 'main section' and a 'special section'. As the herd book for Angus in Germany is closed, there are only animals that are listed in the main section. Gene flow from other breeds is therefore undesirable and currently impossible.

In order to be promoted to the highest herdbook class 'A', the Angus breed in Germany requires a conformation evaluation as part of an association recognition or herdbook cow evaluation. During the conformation evaluation, each animal is assessed in terms of type, muscling and skeleton. As a rule, cows are assessed after the first calving and third calving. Bulls are assessed at the time of licensing at eleven months at the earliest. If a re-evaluation is desired, this is possible again at the earliest at the age of three years. Bulls are only approved if they and their parents are registered in the main section of the studbook and if they're free of nt821. Licensing takes place once and is then valid for life. The external appearance is assessed using a grading system. A grade of 1 is 'very poor' and a 9 is 'excellent'.

The type characteristic describes the animal itself. The orientation is always based on the breeding program of the respective breed. Attention is paid to the expression of typical breed characteristics, which are precisely defined in the breeding objective. An udder that hangs too low and non-absorbent teats result in a maximum sufficient score. With this score, it is not possible to enter the 'A' breeding level. Other characteristics that result in a maximum sufficient type score are defined in the stud book regulations for each breed. Most of these faults are based on serious deviations

## **Betriebsgemeinschaft Dröse Hänigsen**

**(Mittelstraße 5, 31311 Hänigsen Telefon: 01719507142**

**Email: carsten.droese@t-online.de)**

- **Anguszuchtbetrieb seit 2003**
- **Mutterkuhherde von 30 Tieren**
- **Bullenmast mit regionaler Vermarktung**
- **100 % Besamung mit internationaler Abstammung**
- **Verkauf von weiblichen und männlichen Zuchttieren**



from the typical colour of the breed. In the Angus breed, for example, white patches outside the udder area and all deviations from genetic hornlessness are considered to be not in keeping with type.

The sub-characteristic muscling must not be omitted when assessing beef cattle. It describes how strongly or weakly muscled the cattle are. The aim of beef cattle breeding is to breed productive fattening animals that produce an optimal carcass with the highest daily weight gain. The size of the animal and body depth are taken into account in the assessment. These

should be typical of the breed. In particular, the back, shoulder, loin and hindquarters are considered. The animal should be full-fleshed overall and have a closed shoulder, good back width and back length. The hindquarter should have a well-developed haunch.

The third sub-characteristic that plays a role in the conformation evaluation is the skeleton. When assessing the skeleton, the focus is on ensuring unrestricted movement. Foundation or skeletal problems usually have an effect on the feed intake and longevity of the cattle. A cow that is restricted

Herdenbild auf dem Betrieb Uwe Heinz





**Anguszucht in Brandenburg**

**300 herdbuchgeführte**

**Mutterkühe**

**15 gekörte Deckbullen**

**Verkauf von  
Zuchtbullen und -färsen  
Export**



**Agrarproduktion Babe GmbH**

**Kastanienallee 2**

**16845 Neustadt (Dosse) GT Babe**

**Karsten u. Sabrina Wolter**

**+49 170/5330356**

**agr-ar-babe@gmx.de**

in its ability to move due to genetic leg problems cannot achieve satisfactory weight gains or produce enough milk for a calf. Therefore, a cow is required that shows good movement and moves on parallel, slightly angled hind legs.

In addition to the assessment of external appearance, the second mainstay of selection within the beef cattle population is the so-called performance test. This form of performance testing focuses on the measurable characteristics of the animal in order to ultimately estimate the breeding value for each breed and select suitable breeding animals based on these breeding values. In the case of beef cattle, emphasis is mainly placed on two sets of traits. The first is

the breeding value estimation with regard to the production traits, which are specified in the relative breeding value meat. Secondly, breeding value estimation is carried out with regard to reproductive traits. This results in the relative breeding value for breeding performance.

These values form the basis for systematic breeding work in the beef cattle sector. For the individual performance test, a correction is made to the 200-day weight if the animal is between 90 and 280 days old. If the animal is between 281 and 500 days old, a correction is made to the 365-day weight. These data and the birth weight are then used to calculate the daily weight gain.

## Erlesenes Premium-Fleisch aus eigener, nachhaltiger Züchtung

Mit 90 ha Ackerfläche und 50 ha Weidefläche haben unsere 280 Angus- und Wagyu-Rinder genügend Auslauf und Freiheit, so viel ist mal sicher.

Tierwohl steht bei uns an erster Stelle! Bei uns haben unsere Tiere den bestmöglichen Lebensraum. Sie genießen viele Weidegänge und großzügige Außenklima-Stallungen auf gereinigtem Stroh. Genverändertes Futter oder spezielles Mastfutter kommen nicht zum Einsatz.

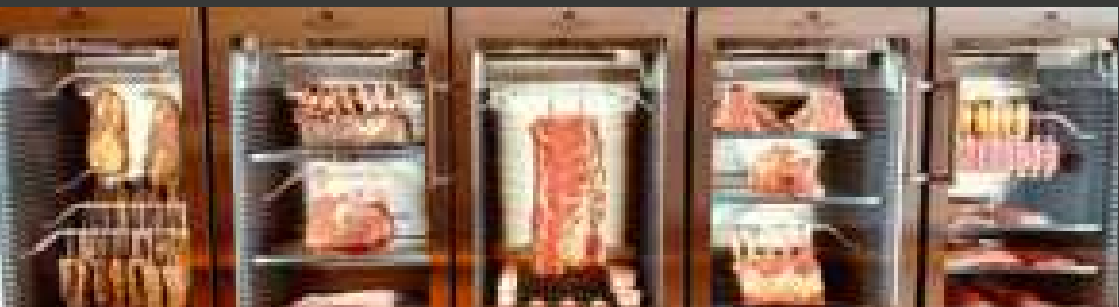
Vertrieb und Vermarktung unserer Angus- und Wagyu-Produkte erfolgen über regionale Partnerschaften, unseren eigenen Hofladen und den Online-Shop **[www.stiens-beef.de](http://www.stiens-beef.de)**.



Tageslicht-Stallungen – Wellness-Oase für unsere Rinder inkl. Berieselung mit gereinigtem Stroh



Angus-Bulle mit reichlich Auslauf auf unseren eigenen Weideflächen



## Relative breeding value for meat

The relative breeding value for meat calculated from this data is used as a nationwide benchmark for the performance of an animal and establishes comparability within the population. As environmental factors always have an influence on an animal, but these must be represented as comparably as possible for the breeding value estimate, each characteristic for the individual animal is corrected on the basis of a comparison with a reference group. It is assumed that all performances were achieved under largely similar conditions. In the field test, this comparison group is defined within a herd and within a calf crop (1 December to 30 November). Due to many small herds, it can happen that a calf crop is very small. In this case, if fewer than three animals can be assigned to this group, the neighbouring cohorts are used for comparison. The herd, sex (male/female), month of birth, birth type (singleton/multiple), calf number and dam age are defined as factors influencing the breeding value. In addition, a regression of the determined weights on the target ages of 200 and 365 days is carried out. Known genetic effects such as the random animal effect and maternal genetic effects are also included in the breeding value estimation. The estimated relative breeding value for meat is made up of three individual

breeding values: The maternal breeding value (ZW<sub>mat</sub>), which describes the daily gain up to the 200th day of life. The breeding value for daily gain up to the 365th day of life (ZW<sub>TZ</sub>) and the breeding value for muscling on the 365th day of life (ZW<sub>B</sub>). The relative breeding value for meat (RZF) is calculated from these three partial breeding values. The partial values are included at different percentages:  $RZF = 40 \% ZW_{mat} + 40 \% ZW_{TZ} + 20 \% ZW_B$ . The publication of the partial breeding values and the total breeding value RZF is carried out as a relative breeding value. This means that the values are shown on a relative value scale with an average value of 100. The mean of the breeding values is determined by the animals defined as the basis. In the case of beef cattle, these are the last five bull years of the respective breed tested with offspring. The 2024 breeding value estimate is therefore based on the bull cohorts from 2016-2020. For the total breeding value RZF, a certainty is given in the breeding value estimate. This is a measure to characterise the information available for the estimation. The more information is available regarding own performance or the performance of related animals, the higher the certainty of the breeding values.



A photograph of a brown Angus bull standing in a lush green field. The bull is facing left, and its shadow is cast on the grass. In the background, there are trees and a blue sky with white clouds.

# Anguszucht Hengst

-Verena Blömeke-

Tel.: 05643 -488

[www.anguszucht-hengst.de](http://www.anguszucht-hengst.de)

## Relative breeding value breeding performance

In addition to beef performance, the performance of suckler cows plays a decisive role, especially for farms producing weaners. For this reason, a breeding value estimate was also introduced for the breeding performance of the individual animal. Data on calving is the main source of data for estimating breeding performance. Information on first calving age, calving interval, calving history, stillbirth rate and productive life (number of calvings) is used for this purpose. This data can mainly be derived from the birth registration in accordance with the Livestock Traffic Ordinance. Information on the birth process and stillbirth rate is provided by the farmer. Only direct maternal effects are currently estimated for the birth history trait. This means that paternal effects, such as the inheritance of heavy calves from the father's side, which lead to problems in the birth process, are not yet included. The reason why it is not possible to analyse the paternal birth process is the data structure

in beef cattle breeding, which is due to the high proportion of natural sired bulls. The relative breeding value for breeding performance (RZL) is made up of three individual breeding values. The breeding value for calving interval (ZW\_ZKZ), the breeding value for stillbirth rate (ZW\_TG) and the breeding value for longevity/number of calvings (ZW\_nKal) from these partial breeding values, the total breeding value for breeding performance (RZL) is then formed as follows:  $RZL = 40 \% ZW\_ZKZ + 30 \% ZW\_TG + 30 \% ZW\_nKal$ . The specification of the breeding values and calculation of the securities and publication is carried out in the same way as the specification for the relative breeding value for beef. However, bulls must have a minimum security of 30 % for the relative breeding values for breeding performance to be published. For cows, there must be at least two calvings.

Text: Kühl

Quelle: <https://www.vit.de/vit-fuers-tier/zuchtwertschaetzung/zws-fleischrinder>

# Voll-Aluminium Viehanhänger



Anhänger für Rinder  
**INDIVIDUELL**  
nach Ihren Wünschen



## **The Association for the Promotion of Angus Breeding and Husbandry in Bavaria, IG Angus Bayern for short, introduces itself.**

The IG Angus Bayern is an association of currently 54 Angus farming and breeding companies, which are mainly located in Bavaria. We are all united by our love of Angus cattle, their husbandry, further development and propagation. Consequently, the purpose set out in our statutes is to promote Angus breeding and husbandry beyond Bavaria,

- to secure its influence wherever this appears necessary by pooling the interests of Angus breeders and keepers.
- To promote good cooperation with all organisations and authorities involved in animal breeding, nature conservation and landscape management.
- To provide advice beyond the circle of members on questions of breeding and the natural, healthy rearing and keeping of Angus through lectures and publications.

Every 5 years, the members elect a 4-member board, which currently consists of the secretary Anton Prechtel, the treasurer Helmut Sichart, the deputy chairman Reiner Bauereiß and the chairman Manfred Winhart.

In terms of numbers and turnover, the Angus breed dominates the beef cattle association in Bavaria. Angus has

also been the most exported breed in Germany for many years and has developed into the No. 1 beef cattle breed in recent years with a good 10,000 herdbook cows. Bavarian Angus breeding has played a major role in this with a good 1,350 herdbook cows. This must be maintained and expanded. It remains the task of all of us to ensure a good presence of the Angus breed, knowing that Angus is the most important beef cattle breed in Bavaria in terms of numbers and turnover

In order to increase the marketing of breeding cattle on the one hand, but also the breeding progress in the member farms, members are financially supported if they purchase a licensed and performance-tested breeding bull at the breeding cattle market in Ansbach or in Ilshofen.

In addition to the competition in terms of performance, national and state livestock shows are also very good marketing measures for comparing the breeds. We therefore support participating members with a transport allowance.

The highlights of our association's life are certainly the specialist excursions that take place every two years. The

educational trips, which usually last two to five days, have taken us to Austria, the Czech Republic, Switzerland, the Benelux countries or Ireland and this year to take part in the European Angus Forum.

As well as expanding knowledge for our own business, this is always an act of international understanding. You meet old acquaintances, get to know new ones and build friendships.

In this way, a European Angus family has developed and continues to develop, which is expressed by the fact that Angus breeders and keepers are warmly welcomed and given a friendly reception everywhere.

We wish the European Angus Forum a successful event and look forward to meeting many friends and acquaintances.

Text: Winhart



# Fleischrinder Verband Bayern e.V.



Die Wurzeln des Fleischrinderverbandes Bayern liegen in einem Zusammenschluss einzelner ANGUS-Betriebe vor über 60 Jahren. Mittlerweile betreuen wir über 1.000 Mitgliedsbetriebe mit 30 verschiedenen Rinderrassen. Bis heute ist ANGUS die Hauptrasse in unserem Verband. Bei uns können Sie hochwertige Herdbuchbullen, weibliche Zuchttiere, oder Absetzer erwerben.

Bayerische ANGUS-Tiere stehen für absolute Qualität und das seit Generationen!



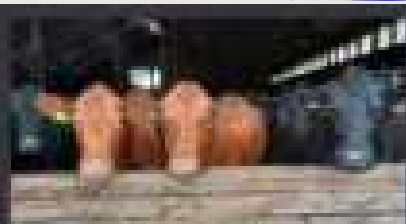
FLEISCHRINDERVERBAND BAYERN e.V.

Kallersgrünthaler Str. 1 | 91322 Arnsbach | TEL. 0981 40041-0 | E-MAIL: info@fvb-bayern.de  
[www.fvb-bayern.de](http://www.fvb-bayern.de)



## Bischof Grimm

„Bischof Grimm“  
das Fleisch vom  
Bayerischen Schwein



„Bischof Grimm“  
das Fleisch vom  
Bayerischen Schwein



PREMIUM BIO BEIF  
von der Halbbauern

„Angershof-Schau“  
das Fleisch vom  
Bayerischen Schwein

100%  
Bio  
Fleisch

Wir haben  
100% Bio-Fleisch  
100% Bio-Fleisch  
100% Bio-Fleisch  
100% Bio-Fleisch  
100% Bio-Fleisch

## MOBILE HOF-SCHLACHTUNG



„MOBILE HOF-SCHLACHTUNG“  
das Fleisch vom  
Bayerischen Schwein

ERSTE MOBILE  
HOF-  
SCHLACHTUNG  
IM LANDEREI  
ANGERSHOF

# Conrad's Hof

Wolfgang und Doreen Stroh  
Bayerstraße 19  
63825 Wattenburg  
06024/2005 info@conradshof.de



## Highlights 2023/24 ANGUS-WEST e.V.

### Foundation of the ANGUS-WEST e.V.

On March 12, 2023, the members of IG Angus West met at the hotel in Bad Wünnenberg to transform the interest group into a registered association ANGUS-WEST e.V.



Franz Löer, Marleen Peitzmeier, Heidi Hibbeln and Michael Horst (Board of ANGUS-WEST e.V.)



Farewell to Birgit Hütter as secretary.  
Thank you for the great years!!

### Review Angus Days 2023

In addition to the bus trips to the individual farms and the cozy get-togethers, the participants also enjoyed the good condition of the Angus animals in NRW. Everyone also remembered the wonderful evenings at the Hotel Jägerhof in Willebadessen. They were also called "Angus days of short distances".

### Own performance test 2024 at the Neumühle farm

Once again this year, the Angus breeders supplied the test with approx. 8-10 Angus bulls, which will be stalled in July 2024.

In the first week of January 2024, the first five bulls from the 2023 test were sold at an online auction.



The AA Angus bull AHK Silas (DE0542438710, born 28.10.2022, 888 PP) from Frank and Heidi Hibbeln was sold for EUR 5,500. (Picture from H. Schulte)



# Angus vom Hof Kamerun

Willi Götsche & Johanna Schneidereit



***Wir züchten mit 30 Anguskühen in rot und schwarz.***

***Besonderen Wert legen wir auf Leichtkalbigkeit, ruhige und umgängliche Tiere.***

***Bei Interesse stellen wir Ihnen gerne, nach vorheriger Absprache, unsere Tiere persönlich vor.***

***Kamerun 1, 25581 Hennstedt (Schleswig-Holstein)***

***0170 46 32317***

***[Johanna.goettsche@gmx.de](mailto:Johanna.goettsche@gmx.de)***

***[www.angus-goettsche.de](http://www.angus-goettsche.de)***

## **FHB-Sternstunden in Bitburg-Fließem on April 05 and 06, 2024**

On April 5th and 6th the 3rd FHB-Sternstunden took place in Bitburg-Fließem. Once again, the Angus breed was well represented by the farms Michael Horst from Straelen and Heidi Hibbeln from Lichtenau.

From the two judging classes, the two very typey Fiber daughters Bellis and Harfe from the Michael Horst farm were able to secure the Champion and Reserve Champion titles.

The great conclusion of the FHB show was followed by the presentation of the 9 farm collections..

Here, the Michael Horst kennel and its animals presented the winning farm collection.



Judging class 1 with the winning heifer Bellis (right)



Collection of the Michael Horst breeding farm

**ANGUS-WEST e.V. wishes all participants of the European Angus Forum a lot of fun and a great week in Germany!**



# Vytelle

THE MOST **ACCESSIBLE, RELIABLE AND PREDICTABLE**  
SOLUTION TO DRIVE GENETIC PROGRESS.



## SENSE

Individual feed intake  
and weight data  
technology



## ADVANCE

A simple, hormone-free  
in vitro fertilization  
system



## ***SETTING THE NEW STANDARD***

### IN BOVINE REPRODUCTION

To learn more about Vytelle:

- Visit our website
- Contact Dauren Matakbayev to learn more  
[dauren.matakbayev@vytelle.com](mailto:dauren.matakbayev@vytelle.com) | +7 702 220 0669



SCAN ME

Anguszucht  
Vier Linden



Stars of our  
Angus breeding

Stars unserer  
Anguszucht



Mette 888 RZF 100

geb. 2009  
13 Kälber bisher  
born in 2009  
13 calves so far



Orkan 888 RZF 123



Merle 988 RZF 111



Robinson 897 RZF 114



Mari 988 RZF 110



Brandon 888 RZF 118

Einer der schönsten Bullen auf  
der Alsfelder Auktion im Januar!!!

One of the most beautiful bulls at the  
Alsfeld auction in January.



Ricada 887 RZF 121

*"Species-appropriate and close to nature"*  
***"Artgerecht und naturnah"***



Wir wünschen allen Angus-Freundinnen und -Freunden schöne  
Tage auf dem **Europäischen Angus-Forum!**  
Inklusive guter Gespräche, interessanter Tiere und viel  
Spaß bei den gemütlichen Abenden.

*We wish all Angus friends beautiful days  
at the **European Angus Forum!**  
Including good conversations, interesting animals and lots of fun in the  
cozy evenings.*

Franz Lör   
[f.loer@angus-vierlinden.de](mailto:f.loer@angus-vierlinden.de)



## IMPRINT

Published by  
Federal Association of German Angus Breeders e. V.  
c/o Rinderzucht Schleswig-Holstein eG  
Rendsburger Street 178  
D - 24537 Neumünster

Telephone: (Office) +49 4321 905 372  
Fax: (Office) +49 4321 905 336  
Mobile: (Managing Director) +49 175 93 68 292

E-Mail: [geschaeftsfuehrung@angus-bundesverband.de](mailto:geschaeftsfuehrung@angus-bundesverband.de)  
Internet: [www.angus-bundesverband.de](http://www.angus-bundesverband.de)

Layout and printing  
STEFFEN MEDIA GmbH, Friedland I Usedom  
[www.steffen-media.de](http://www.steffen-media.de)

### Photo credits

Schulte, Schams, Schmidt, Pohl, Oldenburg, Nagel, Bauereiss, Gerstenkorn, Grünhaupt,  
Bähre, Oelkers, Riekenberg, Schäfer, Sippel, Bischoff, Hessischer Bauernverband

### Emergency telephone numbers for all cases:

Richard Brinette +49 176 55 40 3010  
Chairman

Thore Kühl +49 175 93 68 292  
Managing Director

Steffi Oldenburg +49 173 28 32 933  
Tour support

Fire brigade 112

Police 110



# Anguszuchtbetrieb Emde



Angus und Aberdeen-Angus in rot  
und schwarz  
Verkauf von weiblichen und männlichen  
Bio-Zuchttieren

Angushof Emde  
Am großen Hagen 5  
34497 Korbach  
015146176859



Ihr kompetenter Partner rund um

**Ackerbau, Futtermittel & Ökologische Landwirtschaft**

## Raiffeisen Waldeck-Marsberg GmbH

Raiffeisenstraße 20 • 34497 Korbach

Telefon: +49 (0) 5631/8093 • Telefax: +49 (0) 5631/8095

E-Mail: [info@rwm.raiffeisen.de](mailto:info@rwm.raiffeisen.de) • [www.rwm-raiffeisen.de](http://www.rwm-raiffeisen.de)



**SCHÜTTE  
LANDTECHNIK**



**JOHN DEERE**

NOTHING RUNS LIKE A DEERE

# 5M

## PANORAMIC LOADER POWERHOUSE

PASSION FOR FARMING



Compact and light yet powerful, the 5M excels in manoeuvrability and brings top-notch loader skills to your farm. Its panoramic roof delivers exceptional views, while fingertip shifting guarantees smooth road travel.

Meet the 5M, your ultimate farming companion for everything you do. See it today at your local dealer.

**Ihr Vertriebspartner vor Ort:**  
**Bernhard Schütte GmbH**  
**Am Knapp 30**  
**34431 Marsberg**  
**+49 2991-96200**